



DocBox Printer by Instanet Solutions

User Guide



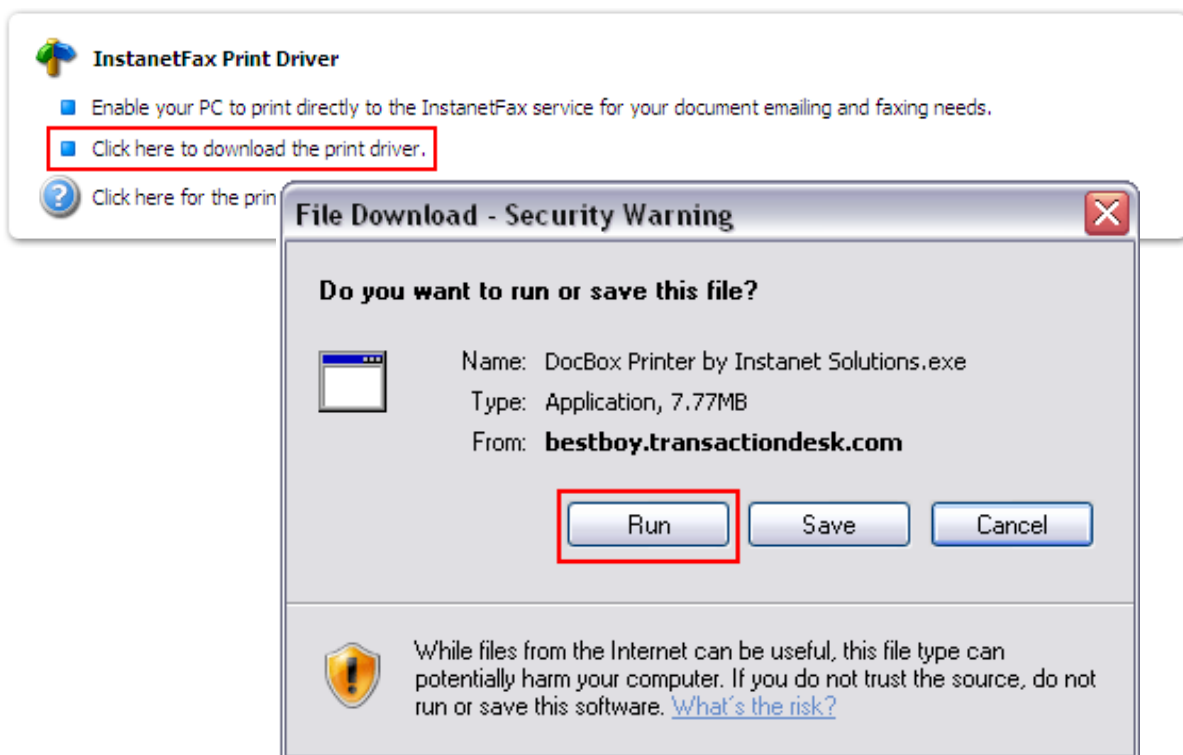
Table of Contents

Installing the Software	3 - 6
Configuring the Software	7 - 8
Emailing	9
Faxing	10

User Guide

Installing the Software

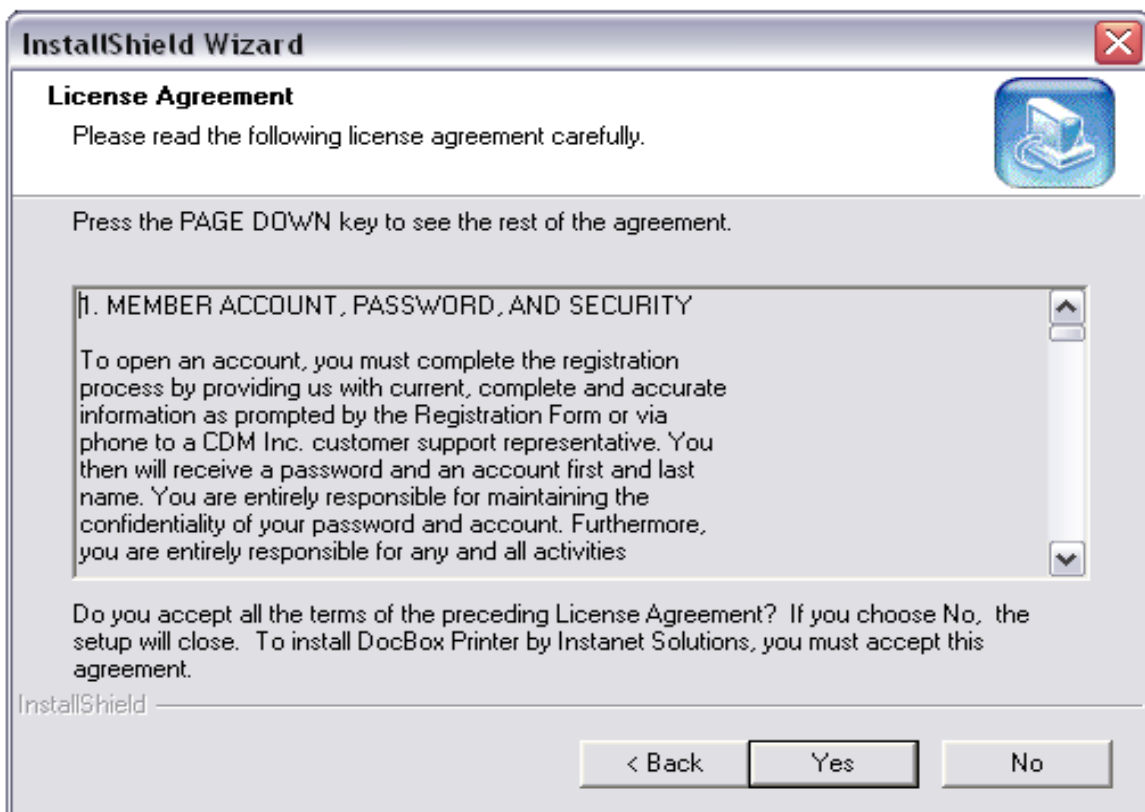
- To begin, simply click the 'Click Here' link.
- When prompted, click the 'Run' button.
- Click the 'Run' button again when prompted.



User Guide

Installing the Software

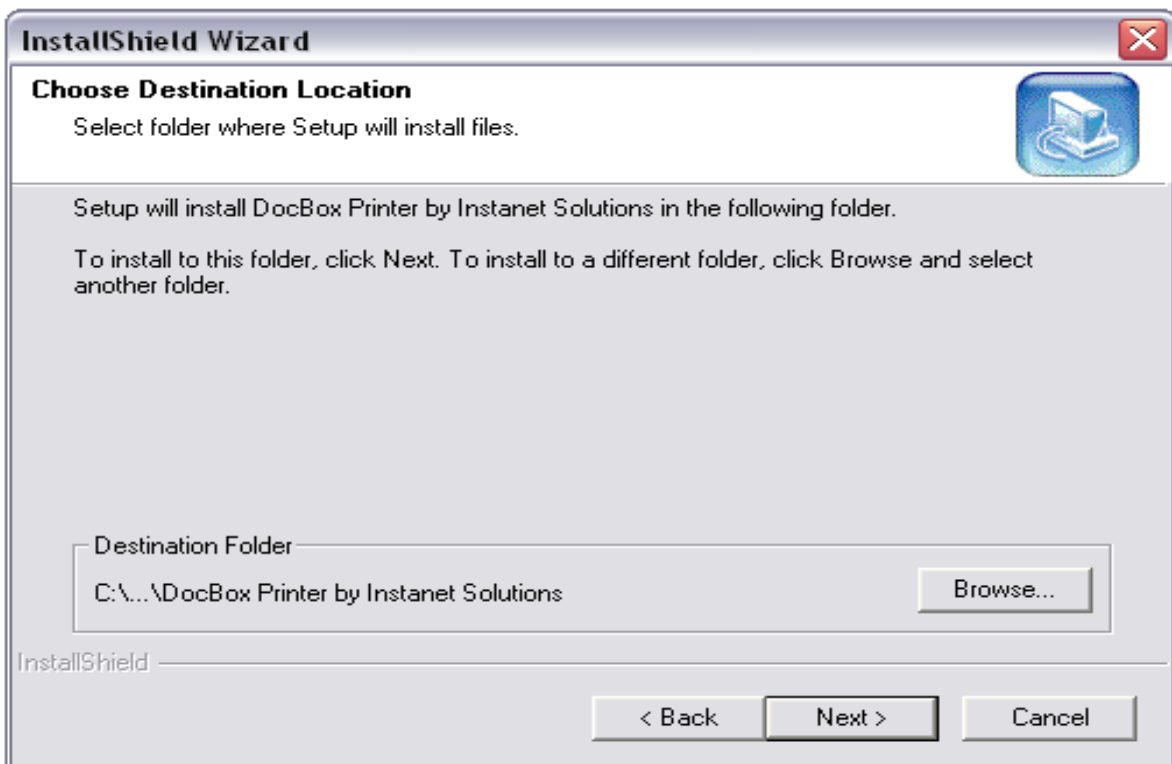
- Please read the License Agreement carefully.
- Click the 'Yes' button to continue.



User Guide

Installing the Software

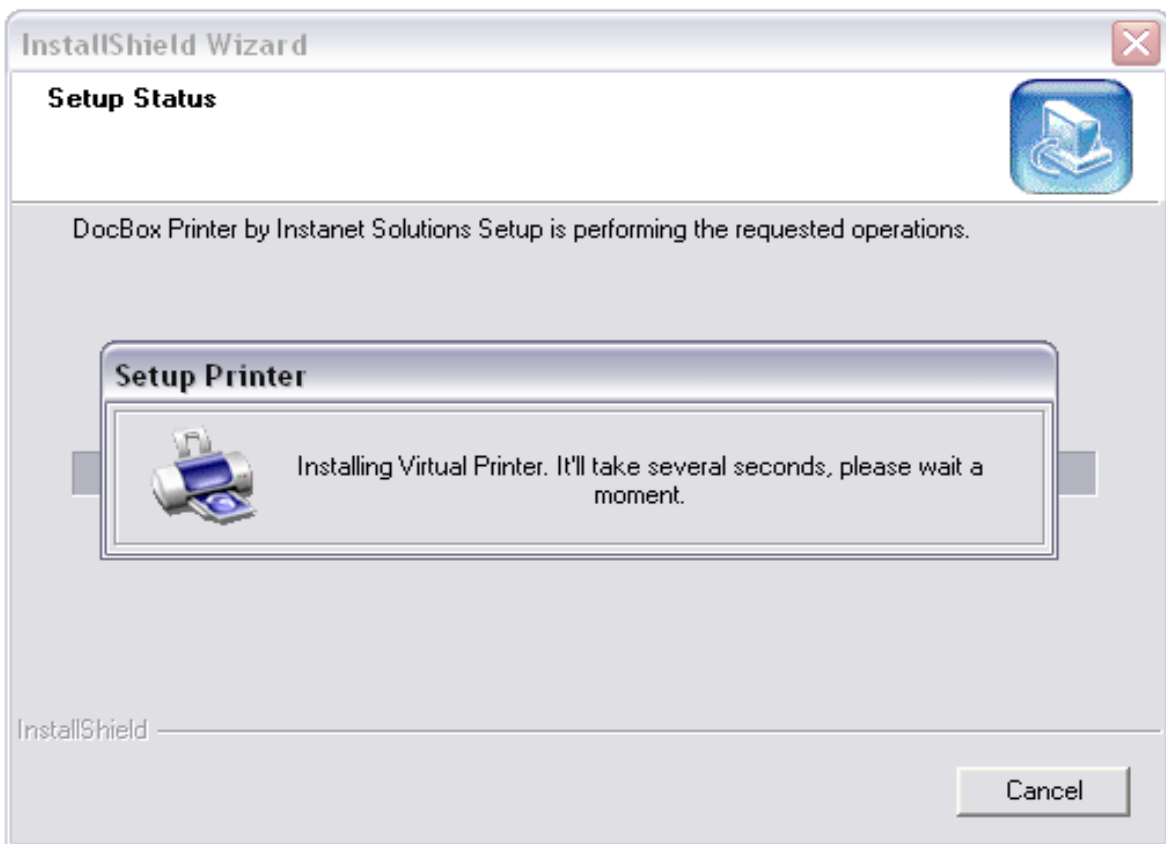
- Click the 'Next >' button.



User Guide

Installing the Software

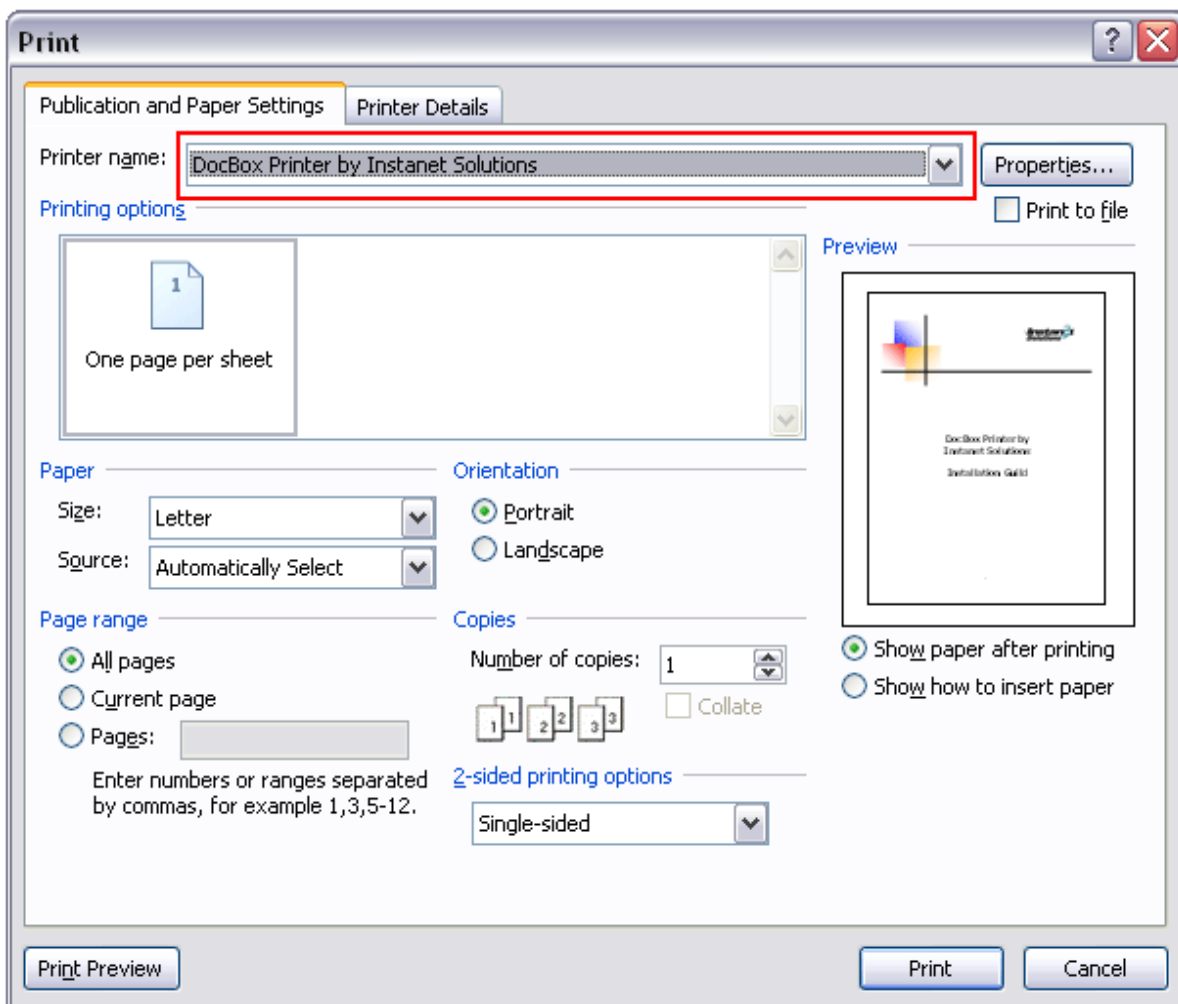
- Once the installation process has completed the window will close.
- The software is now ready to use.



User Guide

Configuring the Software

- To begin using the software, simply open a document or email and print.
- Select the 'DocBox Printer by Instanet Solutions' option from the 'Printer name' list.
- Click the 'Print' button.



User Guide

Configuring the Software

When using the software for the first time you will need to enter your 'User Key'. The software will remember your key for future use.

See notes below for more information regarding enabling your 'User Key' and 'Password'.

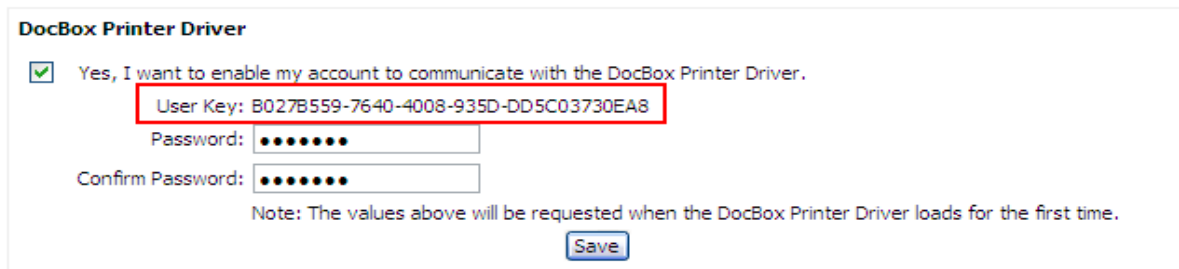


The dialog box is titled "Instanet Solutions Authentication Required" and contains the following elements:

- A close button (X) in the top right corner.
- The instruction: "Please enter your password to continue."
- An icon of a key.
- A "User key:" label followed by a text input field.
- A "Password:" label followed by a text input field.
- "Continue" and "Cancel" buttons at the bottom.

Print Driver Settings

Before you are able to use the 'DocBox Printer by Instanet Solutions' you must first enable it within your account. This option can be found in your 'Settings -> My Preferences -> Print Driver Settings'. You must provide a Password, your 'User Key' is provided and is unique to your account.



The form is titled "DocBox Printer Driver" and contains the following elements:

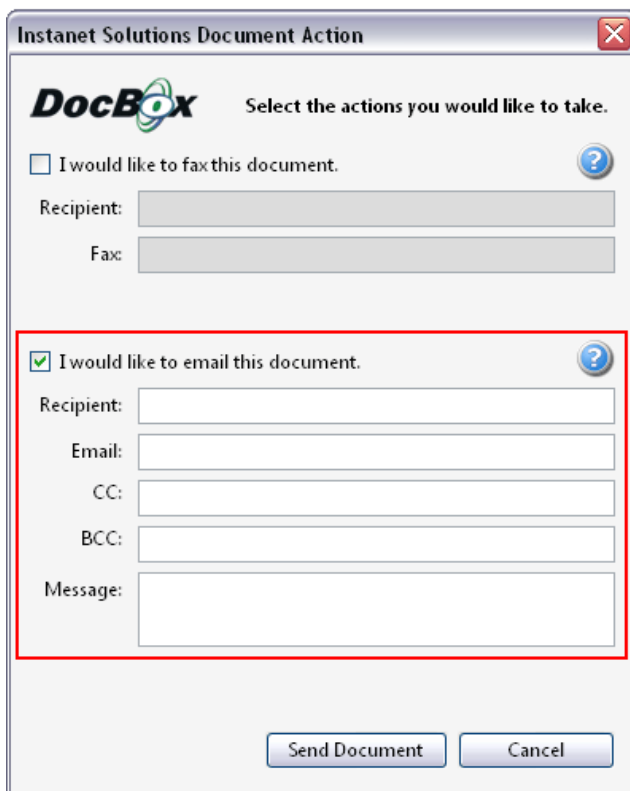
- A checked checkbox with the text: "Yes, I want to enable my account to communicate with the DocBox Printer Driver."
- A red-bordered box containing the "User Key: B027B559-7640-4008-935D-DD5C03730EA8".
- A "Password:" label followed by a masked text input field (seven dots).
- A "Confirm Password:" label followed by a masked text input field (seven dots).
- A note: "Note: The values above will be requested when the DocBox Printer Driver loads for the first time."
- A "Save" button at the bottom.

User Guide

I would like to email this document.

Sends the document via email.

- Enter the recipient's name and email address.
- Add a message.
- Click "Send Document".



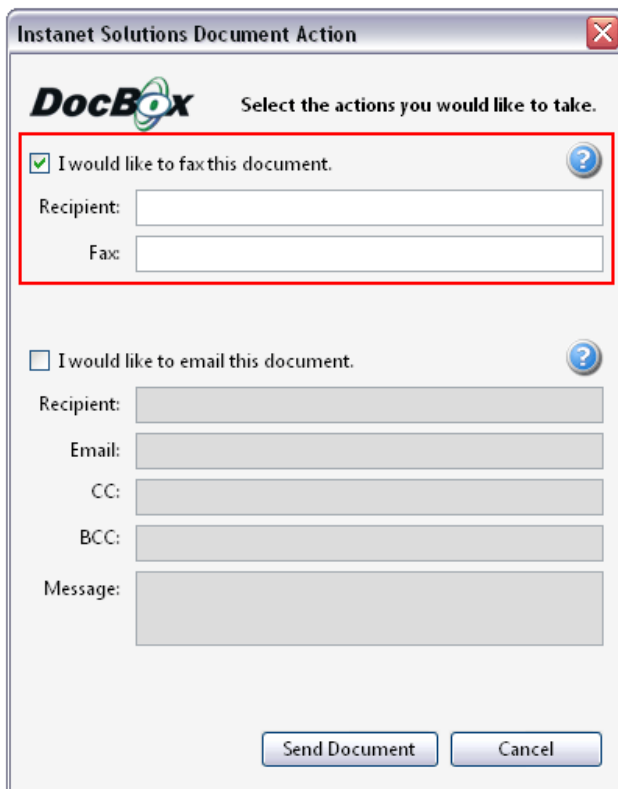
The image shows a dialog box titled "Instanet Solutions Document Action" with a close button (X) in the top right corner. Inside the dialog, the "DocBox" logo is on the left, and the text "Select the actions you would like to take." is on the right. There are two radio button options. The first option, "I would like to fax this document.", is unselected. Below it are two text input fields labeled "Recipient:" and "Fax:". The second option, "I would like to email this document.", is selected with a checkmark. Below it are five text input fields labeled "Recipient:", "Email:", "CC:", "BCC:", and "Message:". A red rectangular box highlights the entire email selection section, including the selected radio button and its associated input fields. At the bottom of the dialog are two buttons: "Send Document" and "Cancel".

User Guide

I would like to fax this document.

Sends the document via fax.

- Enter the recipient's name and fax number.
- Click "Send Document".

A screenshot of a software dialog box titled "Instanet Solutions Document Action". The dialog box has a standard Windows-style title bar with a close button (X) in the top right corner. Below the title bar is the "DocBox" logo and the text "Select the actions you would like to take." There are two main sections. The first section is "I would like to fax this document." which is selected with a checked checkbox. This section is highlighted with a red rectangular border. It contains two input fields: "Recipient:" and "Fax:". The second section is "I would like to email this document." which is not selected (checkbox is unchecked). It contains five input fields: "Recipient:", "Email:", "CC:", "BCC:", and "Message:". At the bottom of the dialog box are two buttons: "Send Document" and "Cancel".

Instanet Solutions Document Action

DocBox Select the actions you would like to take.

I would like to fax this document. ?

Recipient:

Fax:

I would like to email this document. ?

Recipient:

Email:

CC:

BCC:

Message:

Send Document Cancel