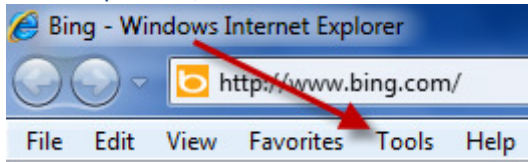
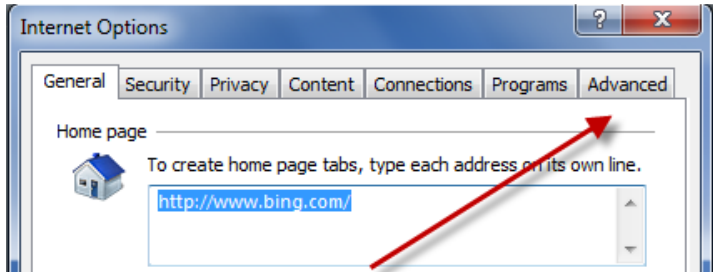


For users with Internet Explorer 8.0: open the browser and follow the steps below:

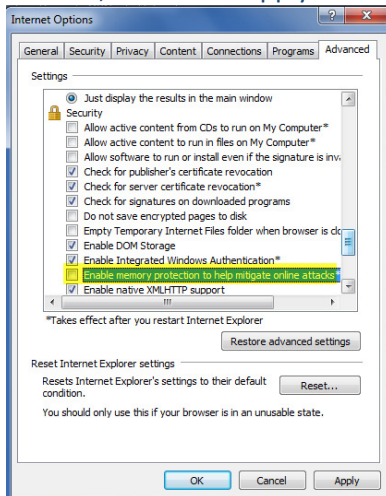
- In the top menu, Click on Tools and then choose “Internet options”



- Click on the Advanced tab



- Under the “Security” section remove the check from “Enable memory protection to help mitigate online attacks”, then click “apply” and then “ok”



- Close ALL Internet Explorer Windows
- Install active x controls by opening Internet Explorer and going to [www.mfr.mlxchange.com/ax](http://www.mfr.mlxchange.com/ax). Be sure to click “Install” to begin the process; you may be prompted to click “install” several times to ensure all components are installed.



### MLS System Component Manager

This tool allows you to manually install the components needed to operate the MLS system.

Install

Cancel

- Once all ActiveX controls are installed, in Internet Explorer Go back tools and then to Internet Options, click on the Advanced tab and place the check back in the box for “Enable memory protection to help mitigate online attacks”, then click “apply” and then “ok”
- Close Internet Explorer
- Re-open your browser and login to [mfr.mlxchange.com](http://mfr.mlxchange.com)
- If problem persists please contact the Help Desk 800-686-7451